

Builder:
Kenneth Vona Construction

Landscape Construction:
Schumacher Companies

Interior Design:
Anthony Catalfano Interiors

Stonework:
O'Hara and Company

Home Integration:
Maverick Integration

Photography:
Richard Mandelkorn

Landscape Architecture:
Dan K. Gordon Associates, Inc.

Text:
Chrissy Makkas

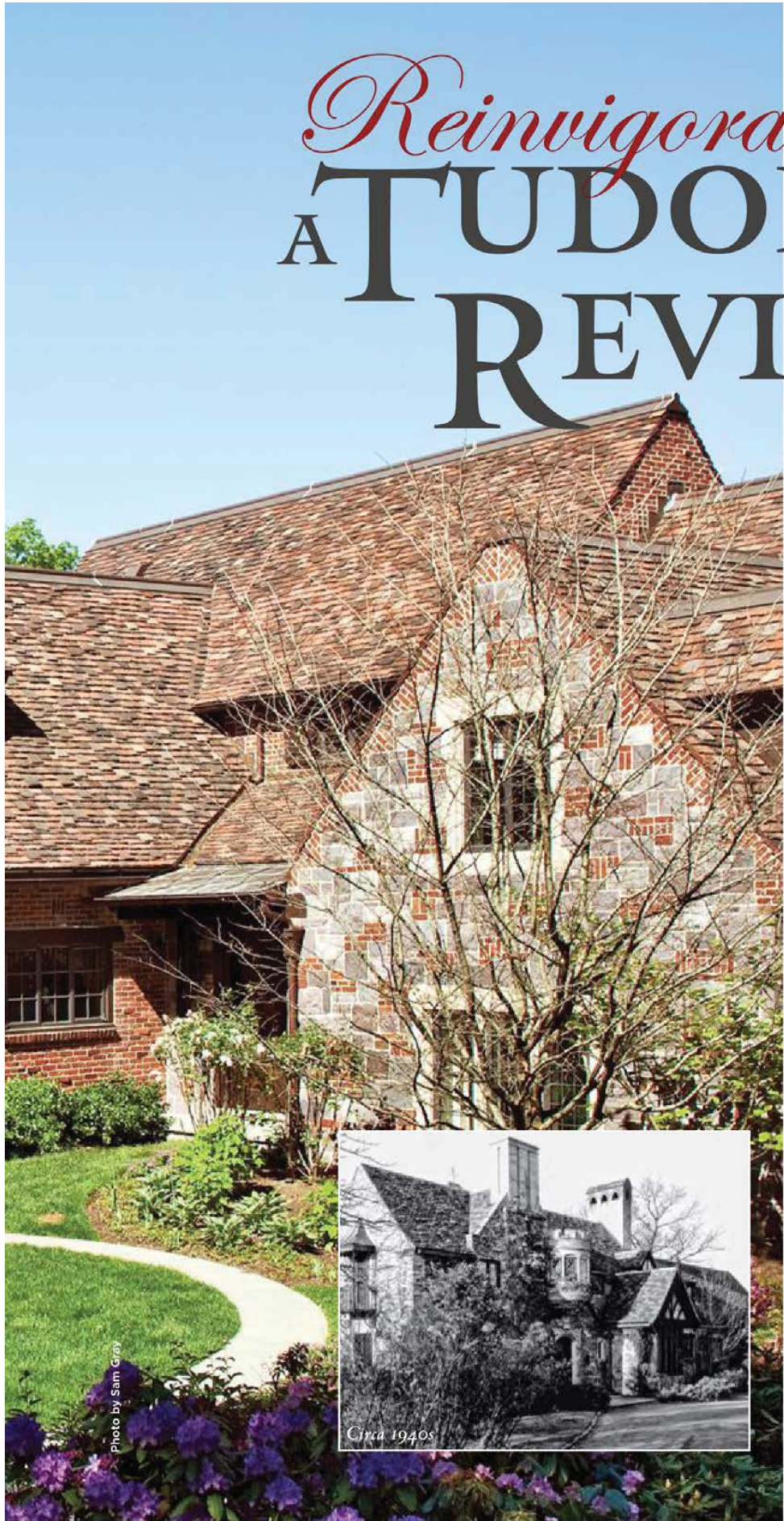
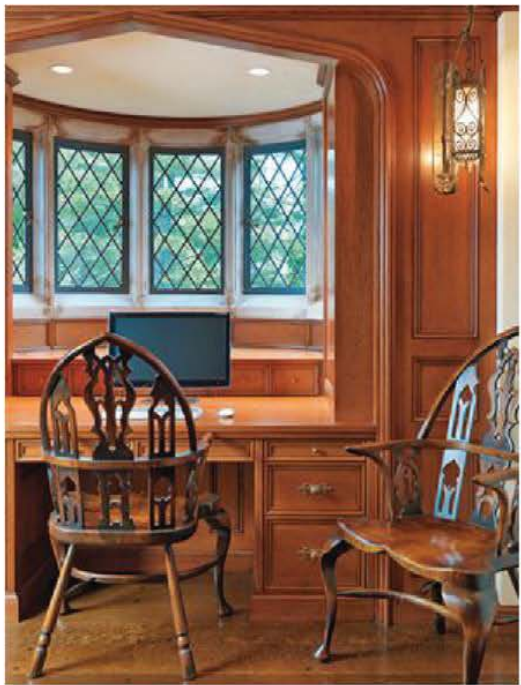


Photo by Sam Gray



Reinvigorating A TUDOR REVIVAL



Initially built in the early 1930s and known as the Earl Major House for its original owner, this Tudor Revival estate in Newton harkens back to a bygone era. The home's complex massing, imposing brick exterior and handmade clay tile roof, as well as a crenellated oriel with diamond paned windows were just a few of the features that made the house an impressive sight to behold before it fell into a state of disrepair. When the current homeowners acquired the property, their friend and interior designer Anthony Catalfano of Anthony Catalfano Interiors introduced them



Previous Pages: The side entrance is adorned by a crenellated oriel with diamond paned windows that drew the homeowner to purchase the property. O'Hara and Company crafted the exterior stonework on the home which included the painstaking recreation of the original oriel whose internal structure had deteriorated and needed to be rebuilt with new steel structural components.

Landscape architecture, designed by Dan K. Gordon Associates, and built by the Schumacher Companies, incorporated a stone band in the oval lawn that is encased by strong evergreen hedges.

Inside the oriel (at right on previous page), a desk was built into the space, and ornate reproduction lighting and chairs echo the details of the arch overhead.

Left: Anthony Catalano Interiors used a combination of reproduction and antique furniture and light fixtures here and throughout the home. The living room also features an antique rug.

to Kenneth Vona Construction who was then called upon to restore the home to its former glory with the help of architectural plans by Greg Colling and Peter Zimmerman Architects. Now, after undergoing an addition and an extensive restoration based on black and white photographs of the home from the 1940s, the new version has surpassed the original.

Completing the restoration was no easy feat. The existing structure was essentially gutted — taken apart down to the steel and timber frame and recreated. The seamless addition allowed the team to expand the kitchen, build a new family room, a three car garage and three bedrooms above, each with full en suite bathrooms. The goal of the project was to make everything about the estate look like it had always been there—from the design and construction of the new addition to the landscape and interior design details, every element of the project was meticulously addressed. Catalano worked hard to create a sense of continuity throughout the home by choosing finishes, furnishings and fixtures that were a combination of antique, reproduction and custom made items that created a Gothic atmosphere that felt natural and cohesive in the setting.



THE GRAND ENTRY
with imposing gothic architecture was almost completely recreated. The railings are one of the few remaining original elements.



Opposite: The starting point for the interior design of the library (formerly a scriptorium) was the inlaid specimen marble floor in a gothic design. The desk and chairs are antiques, and the homeowner found a Tiffany lamp that fit the space perfectly. The tone of the wood is consistent with that used throughout the home, and the same hand forged iron curtain rods were also used throughout to maintain a level of continuity and establish a sense of an old element that could have been original to the home.

Left: The scriptorium as it was in the 1940s.

Below: The dining room, leading into the newly expanded kitchen, features a beautiful tracery ceiling, antique furniture and rugs, and a limestone fireplace with a custom forged iron enclosure. The exquisite quarter-sawn white oak wood floor was reclaimed by Kenneth Vona Construction from an existing 18th century mansion and each piece was painstakingly numbered and reinstalled in the dining room. Hunt Hardwood Floors created the finish that is consistent with the tone of wood they used throughout the home.

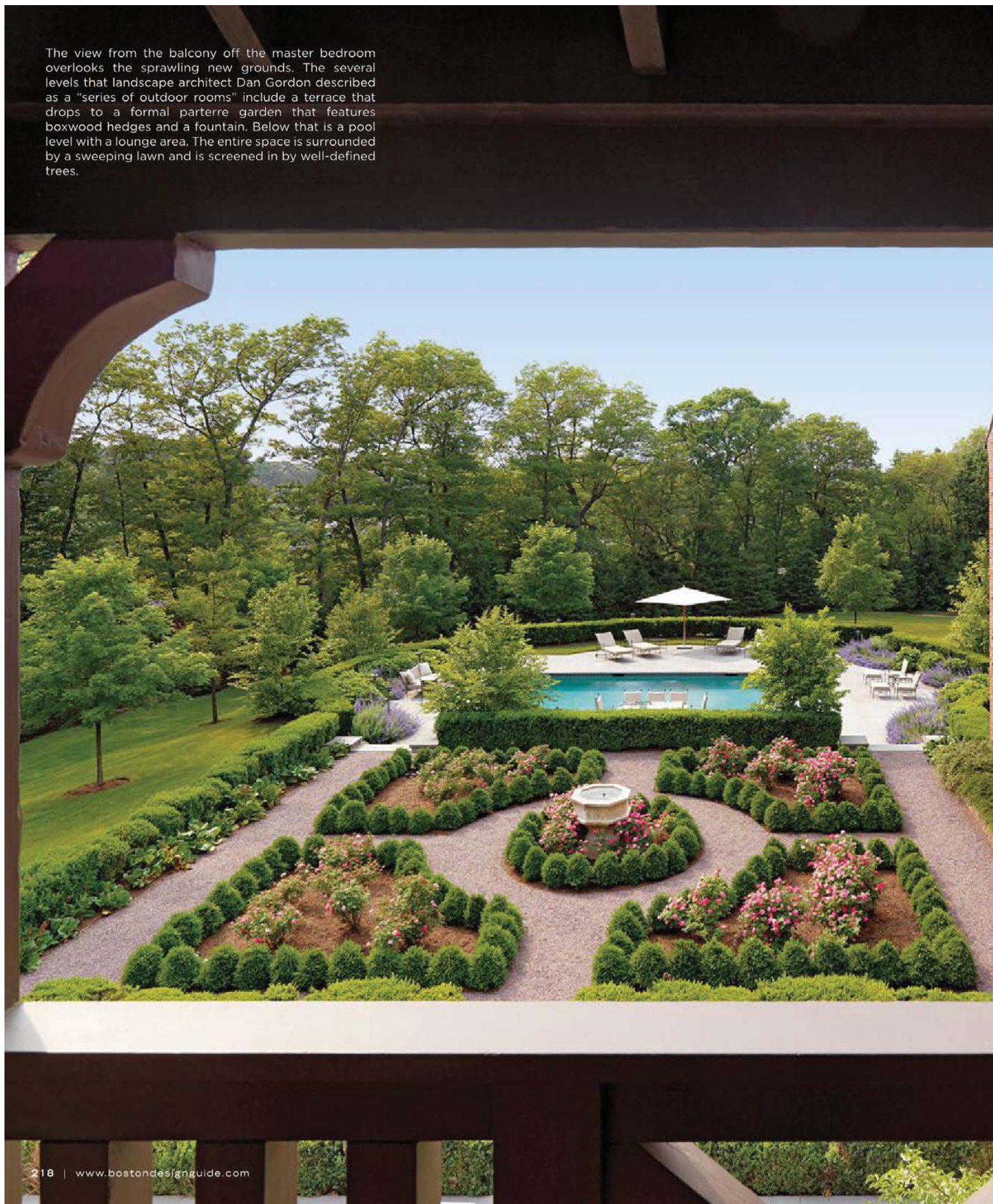
Below left: The dining room as it was in the 1940s.



The new kitchen was designed to feel as though it had always been there. Anthony Catalano Interiors chose a pale yellow for the cabinetry to make the space feel fresh. Every element from the thick butcher blocks flanking the island to the white bronze hand forged hardware, and gunmetal tile backsplash is of great substance with a gothic feel to it. The light fixture is antique and the kitchen features both a bronze sink and stone farmer's sink.



The view from the balcony off the master bedroom overlooks the sprawling new grounds. The several levels that landscape architect Dan Gordon described as a "series of outdoor rooms" include a terrace that drops to a formal parterre garden that features boxwood hedges and a fountain. Below that is a pool level with a lounge area. The entire space is surrounded by a sweeping lawn and is screened in by well-defined trees.



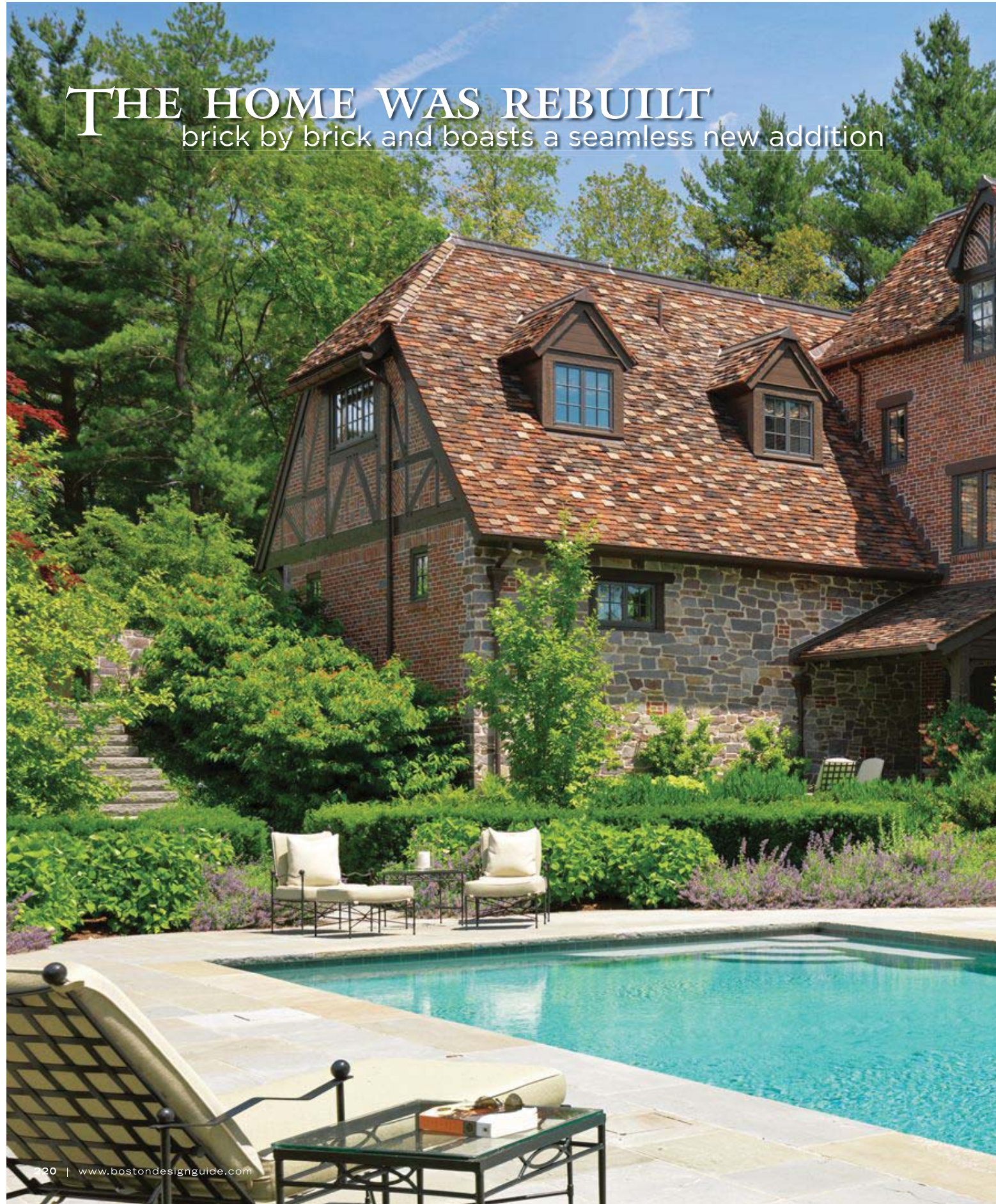
The grounds of the estate also received a makeover; landscape architects at Dan K. Gordon Associates created gardens and landscaping worthy of the home's grand and sophisticated stature. Gordon described the landscape that is constructed and maintained by the Schumacher Companies as a series of outdoor spaces that are closely related to the interior architecture. New features include a well defined oval lawn with an inset band of stone off of the side entry and several levels at the back of the home that feature a great deal of topographic grade change along the natural slope of the land. As was the goal for the architecture and interiors, the landscape suits the property and looks like it has always been there.

Ken Vona of Kenneth Vona Construction described this Tudor Revival as a dream project. "Working on this home was a once in a lifetime opportunity," he said. "We had the most incredible homeowners, who are truly some of the nicest people I have ever met, and they had the means and the desire to do justice to this magnificent property."

It is a credit to the successful collaboration between the homeowners and the team of highly qualified professionals that when you walk onto the property today, you are presented with a sprawling estate that is true to its Tudor Revival roots while being subtly enhanced with modern amenities. The home was rebuilt brick by brick and boasts a seamless new addition, but instead it appears to be a beautifully maintained home from the 1930s with interiors, exteriors and landscape architecture that have stood the test of time. Communication, collaboration, and expert craftsmanship never go out of style. ❧

THE HOME WAS REBUILT

brick by brick and boasts a seamless new addition



A combination of Indiana limestone, rare European lilac, and twenty-three patterns of brick were used to create the exterior of the home. Kenneth Vona Construction sourced used Ludowici tiles to create an authentically rustic look for the roof.